

L O G A N C O L L E C T I O N • S F M O M A

A PORTRAIT OF OUR TIMES:

INTRODUCTION

TO THE

LOGAN

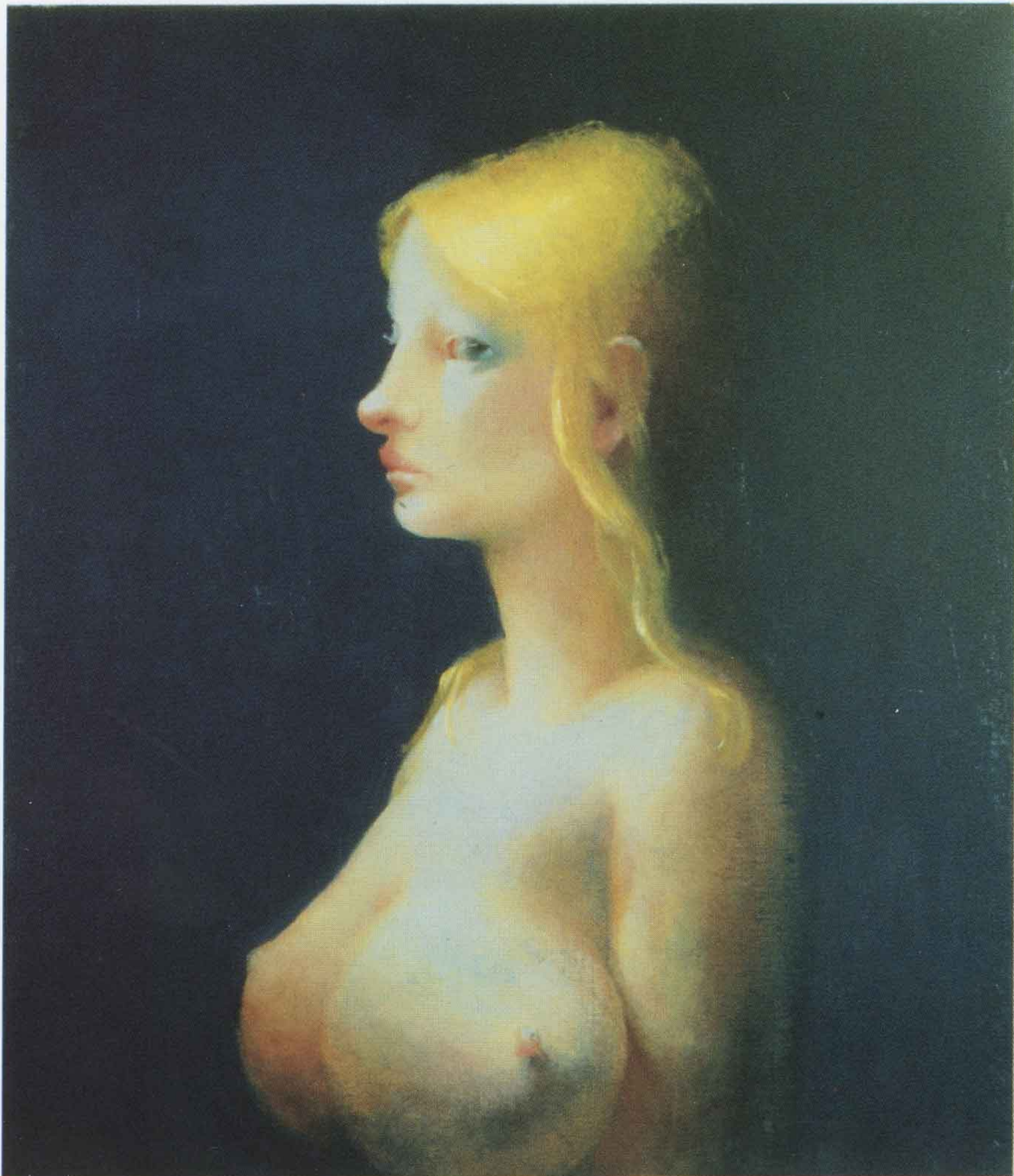
COLLECTION

[No 1]

A PORTRAIT OF OUR TIMES:
AN INTRODUCTION TO
THE LOGAN COLLECTION

SAN FRANCISCO MUSEUM
OF MODERN ART

[SEPTEMBER 29, 1998 - JANUARY 03, 1999]



[Plate 19]

Lisa Yuskavage

Helga

1993

[WORKS IN THE EXHIBITION]

- 01** Francesco Clemente
Italian, born 1952
Mother, Lover, Daughter, 1982
oil on canvas
77³/₈ x 93³/₄ in.
[196.5 x 238.1 cm]
Plate 16
- 02** Robert Colescott
American, born 1925
Colored TV, 1977
acrylic on canvas
84 x 66 in.
[213.4 x 167.6 cm]
Plate 08
- 03** Marlene Dumas
South African, born 1953
Cold Woman, 1995
oil on canvas
78¹/₂ x 39³/₄ in.
[199.4 x 101 cm]
Plate 18
- 04** Fang Lijun
Chinese, born 1963
Series 1 No. 3, 1990–91
oil on canvas
31⁵/₈ x 39³/₈ in.
[80.3 x 100 cm]
Plate 27
- 05** Gilbert + George
Italian and British, born 1943 and 1942
SUCK, 1977
16-panel photograph
94⁷/₈ x 79¹/₈ in.
[241 x 201 cm]
Plate 04
- 06** Antony Gormley
British, born 1950
Lost Subject III, 1994
lead, fiberglass, and air
8¹/₄ x 73¹/₄ x 93¹/₄ in.
[21 x 186.1 x 236.9 cm]
Plate 23
- 07** Philip Guston
American, born Canada, 1913–1980
The Room, 1970
oil on linen
52 x 60 in.
[132.1 x 152.4 cm]
Plate 07
- 08** Richard Hamilton
British, born 1922
War Games, 1991–92
oil on Scanchrome on canvas
79 x 79 in.
[200.7 x 200.7 cm]
Plate 03
- 09** Damien Hirst
British, born 1965
Did You No Wrong, 1990–91
drug bottles in cabinet
54 x 40 x 9 in.
[137.2 x 101.6 x 22.9 cm]
Plate 25
- 10** Anselm Kiefer
German, born 1945
Operation Sea Lion, 1975
oil on burlap
67 x 74³/₄ in.
[170.2 x 189.9 cm]
Plate 06
- 11** Jeff Koons
American, born 1955
Self-Portrait, 1991
marble
37¹/₂ x 20¹/₂ x 14¹/₂ in.
[95.3 x 52.1 x 36.8 cm]
Plate 12
- 12** Glenn Ligon
American, born 1960
Self-Portrait [VI], 1996
silkscreen on canvas
48 x 40 in.
[121.9 x 101.6 cm]
Plate 13
- 13** Liu Wei
Chinese, born 1965
Two Drunk Painters, 1990
oil on canvas
59 x 39 in.
[149.9 x 99.1 cm]
Plate 26
- 14** Yasumasa Morimura
Japanese, born 1951
Portrait [Futago], 1988
color photograph
82³/₄ x 118 in.
[210.2 x 299.7 cm]
Plate 14

- 15** Juan Muñoz
Spanish, born 1953
Double Dwarf, 1989
mixed media in three parts:
wood, papier-mâché, and acrylic
43¹/₂ x 18 x 35 in.
[110.5 x 45.7 x 88.9 cm]
Plate 22
- 16** Bruce Nauman
American, born 1941
*Rinde Head/Rinde Head Stacked,
Nose to Nose*, 1990
cast wax
18 x 10 x 7 in.
[45.7 x 25.4 x 17.8 cm]
Plate 09
- 17** Richard Patterson
British, born 1963
Motorcrosser III, 1995
oil and acrylic on canvas
82 x 124 in.
[208.3 x 315 cm]
Plate 17
- 18** Marc Quinn
British, born 1964
No Visible Means of Escape VII, 1997
RTV polyurethane and rope
129⁷/₈ x 25¹/₄ x 9 in.
[329.9 x 64.1 x 22.9 cm]
Plate 24
- 19** Gerhard Richter
German, born 1932
Reisebüro, 1966
oil on canvas
59 x 51¹/₄ in.
[149.9 x 130.2 cm]
Plate 05
- 20** Ed Ruscha
American, born 1937
Sin with Olives, 1969
oil on canvas
19³/₄ x 23³/₄ in.
[50.2 x 60.3 cm]
Plate 11
- 21** Thomas Schütte
German, born 1954
Grosse Geister [Figure 11], 1996
cast aluminum, seawater resistant
101¹/₈ x 43¹/₄ x 48 in.
[256.9 x 114 x 121.9 cm]
Plate 21
- 22** Thomas Schütte
German, born 1954
Grosse Geister [Figure 12], 1998
cast aluminum, seawater resistant
106¹/₄ x 57¹/₈ x 37³/₈ in.
[269.9 x 145.1 x 94.9 cm]
Plate 20
- 23** Cindy Sherman
American, born 1954
Film Still #6, 1977
photograph
40 x 30 in.
[101.6 x 76.2 cm]
Plate 15
- 24** Andy Warhol
American, 1928–1987
Double Jackie, 1964
silkscreen ink on canvas
20 x 32 in.
[50.8 x 81.3 cm]
Plate 02
- 25** Andy Warhol
American, 1928–1987
Self Portrait [Four Images], 1986
synthetic polymer paint and
silkscreen ink on canvas
80 x 80 in.
[203.2 x 203.2 cm]
Plate 10
- 26** Andy Warhol
American, 1928–1987
Untitled [Silver Electric Chair], 1963
oil on canvas
22 x 28 in.
[55.9 x 71.1 cm]
Plate 01
- 27** Lisa Yuskavage
American, born 1962
Helga, 1993
oil on linen
36 x 30 in.
[91.4 x 76.2 cm]
Plate 19